



CARNAHAN · PROCTOR · CROSS, INC.

CONSULTING ENGINEERS · SURVEYORS · PLANNERS

6101 WEST ATLANTIC BOULEVARD, MARGATE, FLORIDA 33063

PHONE: 954-972-3959 FAX: 954-972-4178

AUGUST 2002

991010

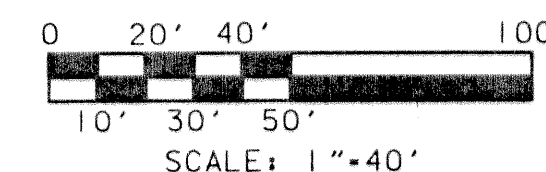
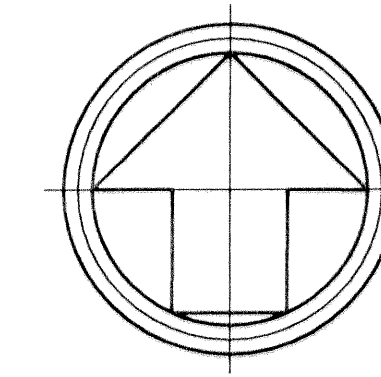
JJM

ANTHONY GROVES P.U.D.

ANTHONY GROVES PHASE 2

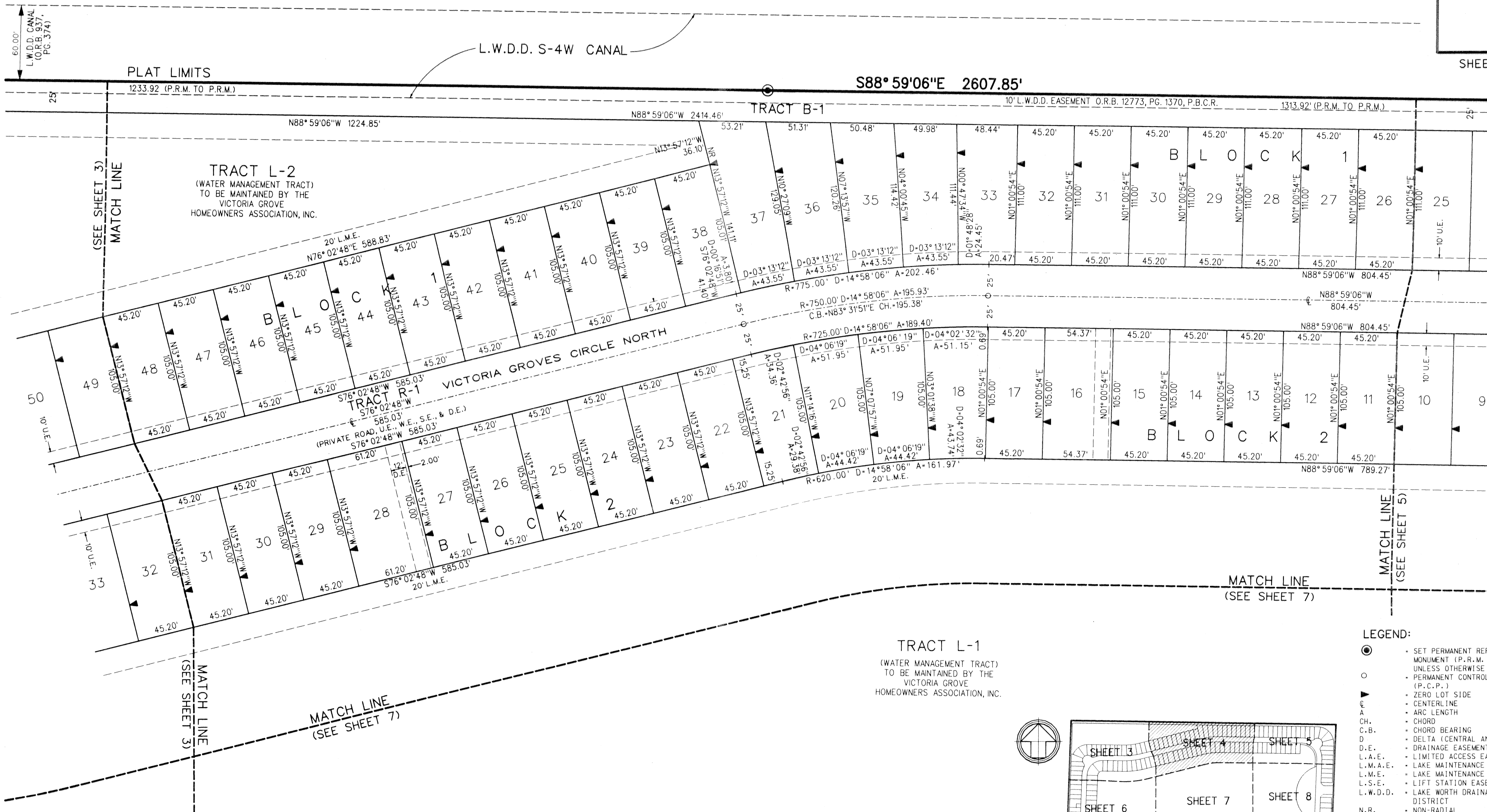
A PORTION OF SECTION 1, TOWNSHIP 44 SOUTH, RANGE 41 EAST,
VILLAGE OF ROYAL PALM BEACH, PALM BEACH COUNTY, FLORIDA

61



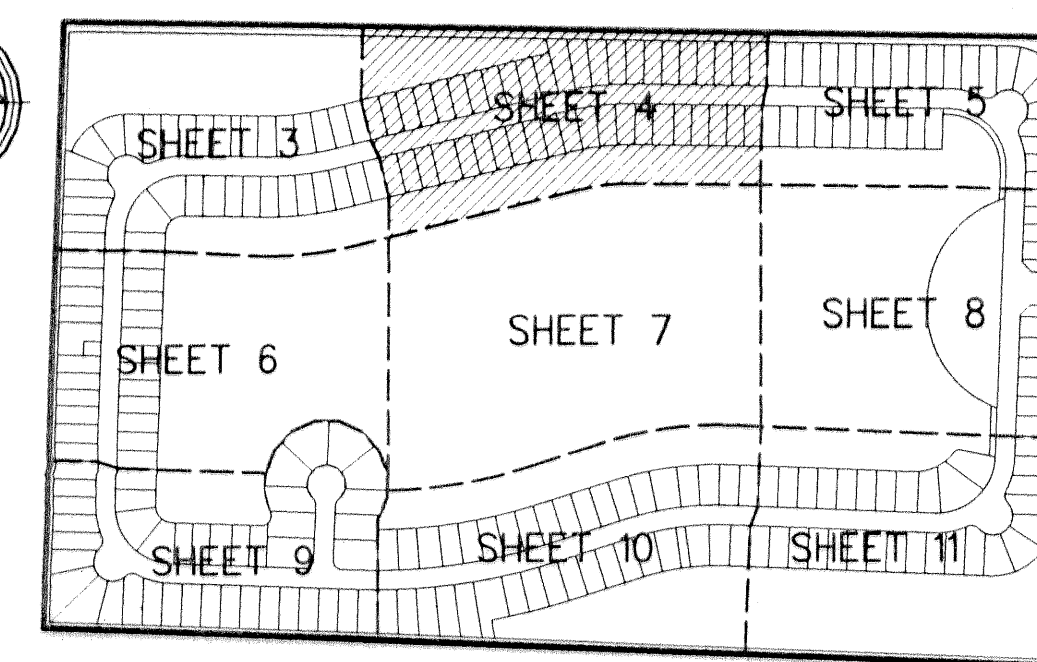
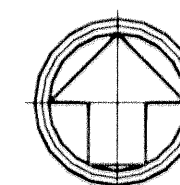
UNPLATTED ACREAGE

SHEET 4 OF 11



LEGEND:

- SET PERMANENT REFERENCE MONUMENT (P.R.M.) • LB2936 UNLESS OTHERWISE NOTED
- PERMANENT CONTROL POINT (P.C.P.)
- ▲ ZERO LOT SIDE
- ⊙ CENTERLINE
- ⌒ ARC LENGTH
- ⌒ CHORD
- ⌒ CHORD BEARING
- Δ DELTA (CENTRAL ANGLE)
- D.E. DRAINAGE EASEMENT
- L.A.E. LIMITED ACCESS EASEMENT
- L.M.A.E. LAKE MAINTENANCE ACCESS EASEMENT
- L.M.E. LAKE MAINTENANCE EASEMENT
- L.S.E. LIFT STATION EASEMENT
- L.W.D.D. LAKE WORTH DRAINAGE DISTRICT
- N.R. NON-RADIAL
- O.R.B. OFFICIAL RECORDS BOOK
- PG. PAGE
- P.B. PLAT BOOK
- P.B.C.R. PALM BEACH COUNTY RECORDS
- P.O.B. POINT OF BEGINNING
- P.O.C. POINT OF COMMENCEMENT
- P.U.D. PLANNED UNIT DEVELOPMENT
- R RADIUS
- R/W RIGHT-OF-WAY
- SE SEWER EASEMENT
- SF SQUARE FEET
- U.E. UTILITY EASEMENT



KEY MAP
N.T.S.